



The Digital Credential You Can Trust™



# Post.Trust I.D. Setup User Guide

Welcome to the Post.Trust I.D. Setup User Guide. Please review the Post.Trust I.D. Setup Pre-requisites below. Then follow the steps outlined in this User Guide prior to inserting your Post.Trust I.D. unique digital credential.

### \*\*\* IMPORTANT \*\*\*

DO NOT INSERT YOUR POST.TRUST I.D. UNIQUE DIGITAL CREDENTIAL INTO A USB PORT BEFORE OR DURING THE SETUP PROCESS



## Post.Trust I.D. Setup Pre-requisites

OPERATING SYSTEMS	Microsoft® Windows® XP Home, Professional with Service Pack 2 or 3 (32-bit and 64-bit); Windows Vista® Home Basic, Home Premium, Business, Ultimate, or Enterprise with or without Service Pack 1 (32-bit and 64-bit)
ADOBE ACROBAT PROFESSIONAL	Acrobat Pro versions 7.0, 8.0 or 9.0 for Windows, 1.3GHz or faster processor
MINIMUM PC SPECIFICATION	Internet Explorer 6.0, 256MB of RAM (512MB recommended), 250MB of available hard-disk space, 1,024x768 screen resolution, USB Port
INTERNET CONNECTION	Specific access to: <ul style="list-style-type: none"> <li>• <a href="http://crl.adobe.com/cds.crl">http://crl.adobe.com/cds.crl</a></li> <li>• <a href="http://crl.trust.ie/documentsecurity/adobecds/adobe_cds.crl">http://crl.trust.ie/documentsecurity/adobecds/adobe_cds.crl</a></li> <li>• <a href="http://timestamp.trust.ie/tss-webclient/RequestHandler">http://timestamp.trust.ie/tss-webclient/RequestHandler</a></li> </ul>

\*\*\*\*\*



For further information, visit [www.post.trust.ie](http://www.post.trust.ie)

FORM: PTCDS008

## Post.Trust I.D. Setup :

1. Insert the **Autorun-enabled Post.Trust I.D. Setup CD** into your computer's CD-ROM drive. This will launch the Post.Trust I.D. Setup Wizard.

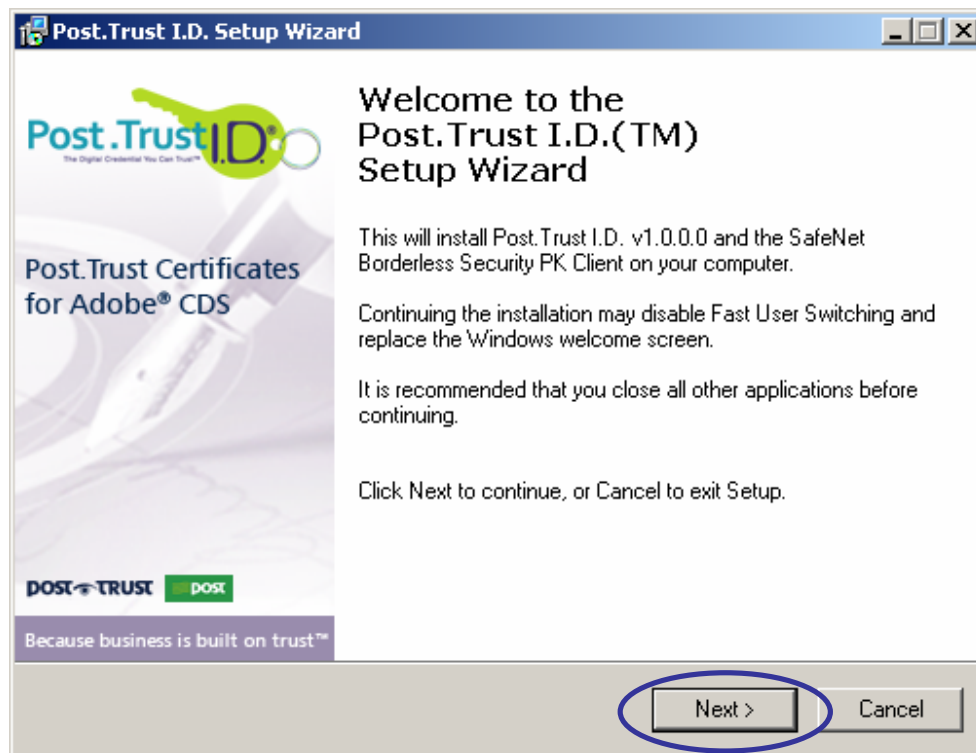


Figure 1. - Welcome to the Post.Trust I.D. Setup Wizard

2. Click **Next** to continue setup.

3. The License Agreement reminds you that you have signed a User Subscriber Agreement with Post.Trust Limited and that by clicking 'I accept' you agree that you have signed this agreement. Click **I accept** and then click **Next**.

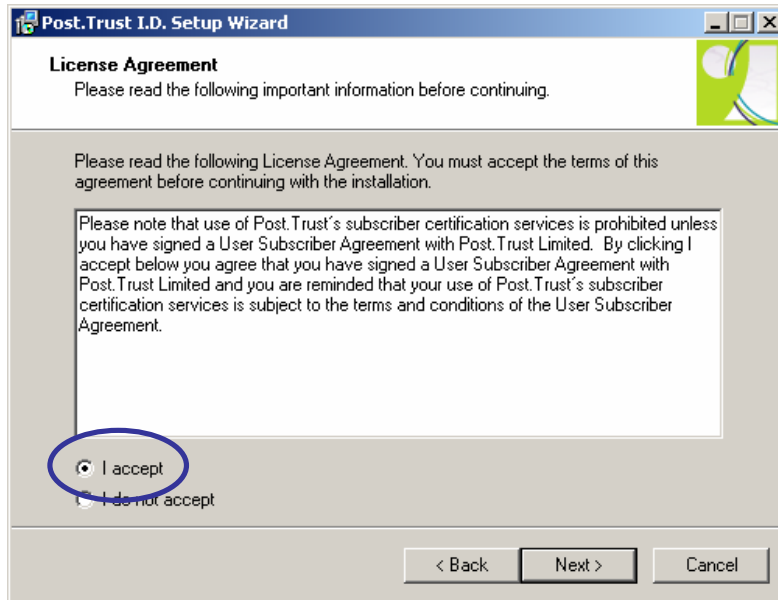


Figure 2 - Post.Trust I.D. License Agreement

4. The default destination Post.Trust I.D. is installed to is C:\Program Files\Post.Trust I.D.. You can change the destination by clicking **Browse**. Otherwise click **Next** to continue.

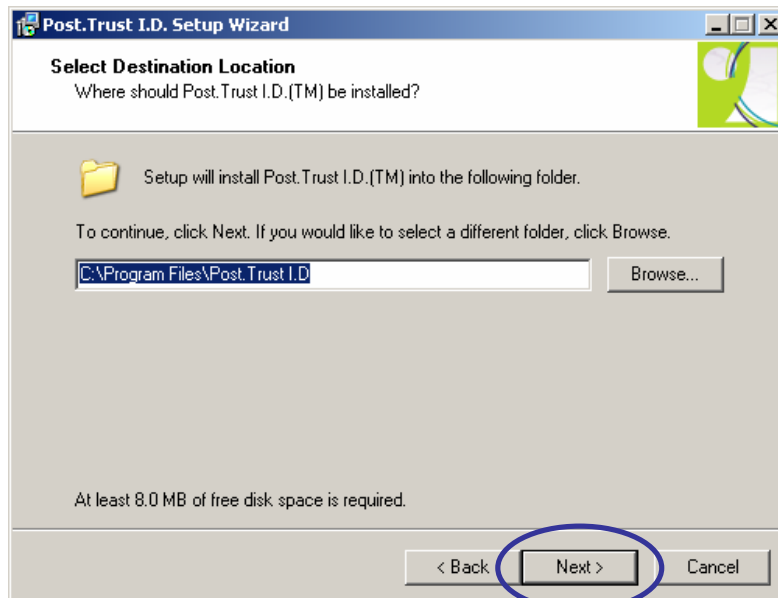


Figure 3 - Post.Trust I.D. Destination Location



5. Setup will now create the program's shortcuts in a folder entitled "Post.Trust I.D."

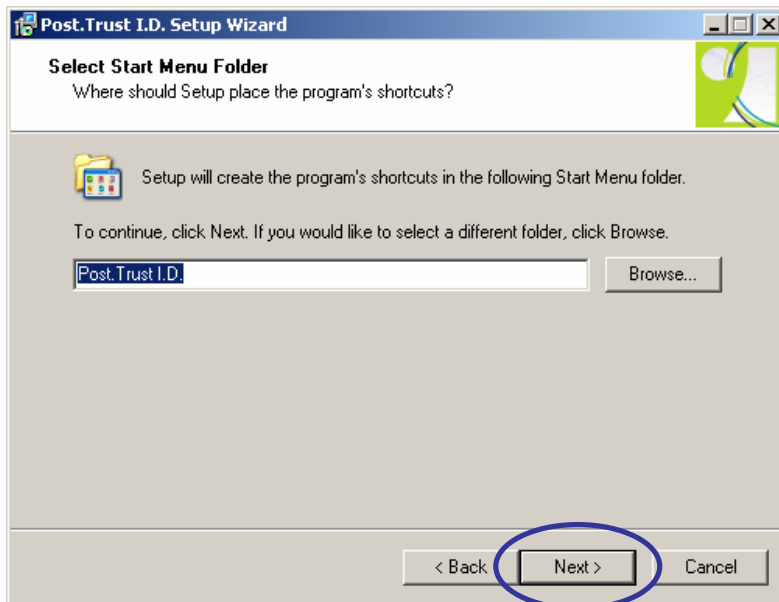


Figure 4 – Start Menu Folder

6. The Post.Trust I.D. program will now be installed on your computer. Click **Install**.

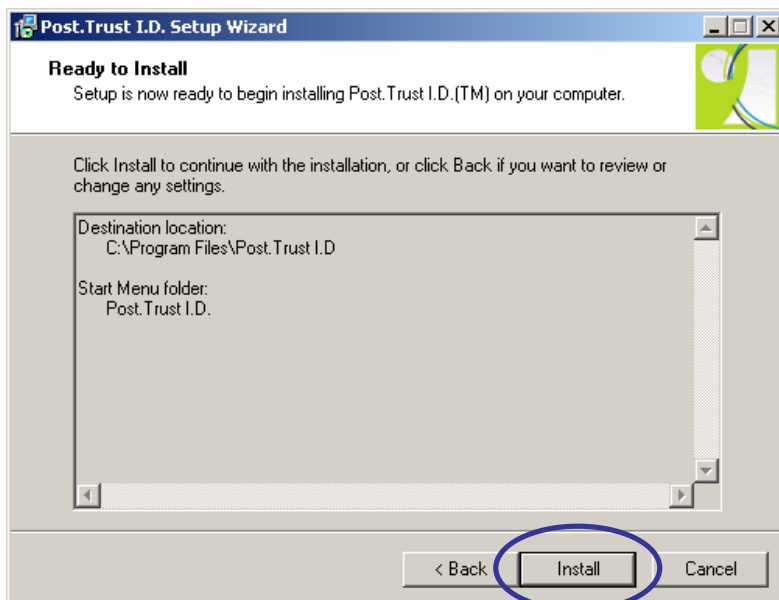


Figure 5 - Ready to Install

7. Please wait while Setup installs Post.Trust I.D. and the SafeNet Client Software is installed onto your computer.

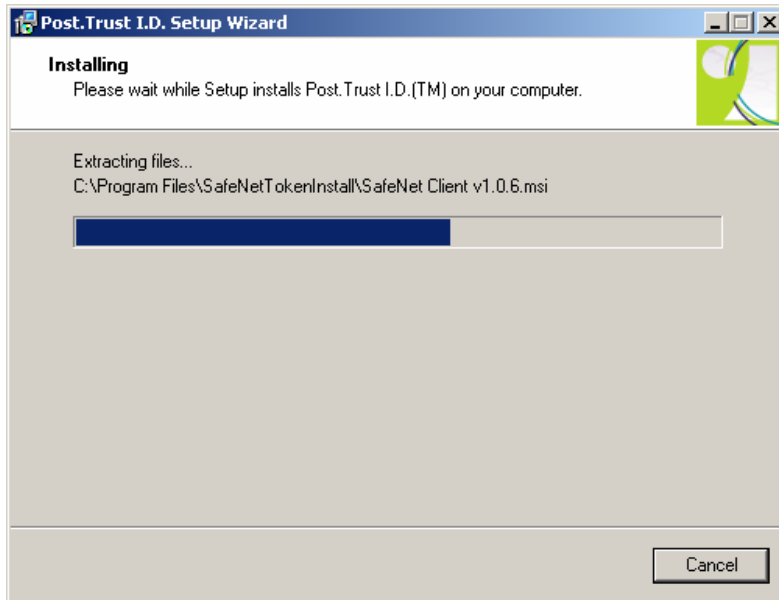


Figure 6 – Installation in progress.

8. The screen below overlays the 'Post.Trust I.D Setup Wizard' Installing Dialog box - no user interaction is required.

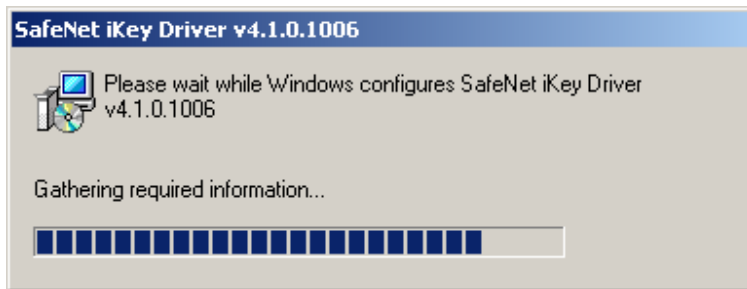


Figure 7 – SafeNet iKey Driver configuration.

9. The screen below overlays the 'Post.Trust I.D Setup Wizard' Installing Dialog box replacing the previous screen - no user interaction is required.

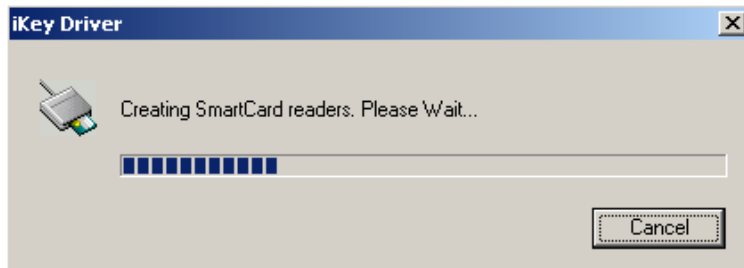


Figure 8 – iKey Driver: Creating SmartCard readers.

10. The screen below overlays the 'Post.Trust I.D Setup Wizard' Installing Dialog box replacing the previous screen – no user interaction is required.

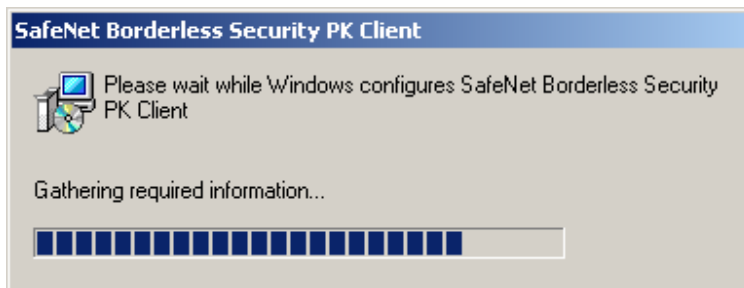


Figure 9 – SafeNet Borderless Security PK Client configuration.

11. The Post.Trust I.D. Setup is now complete. It is recommended that you now restart your computer. Click **Finish** to exit Setup.

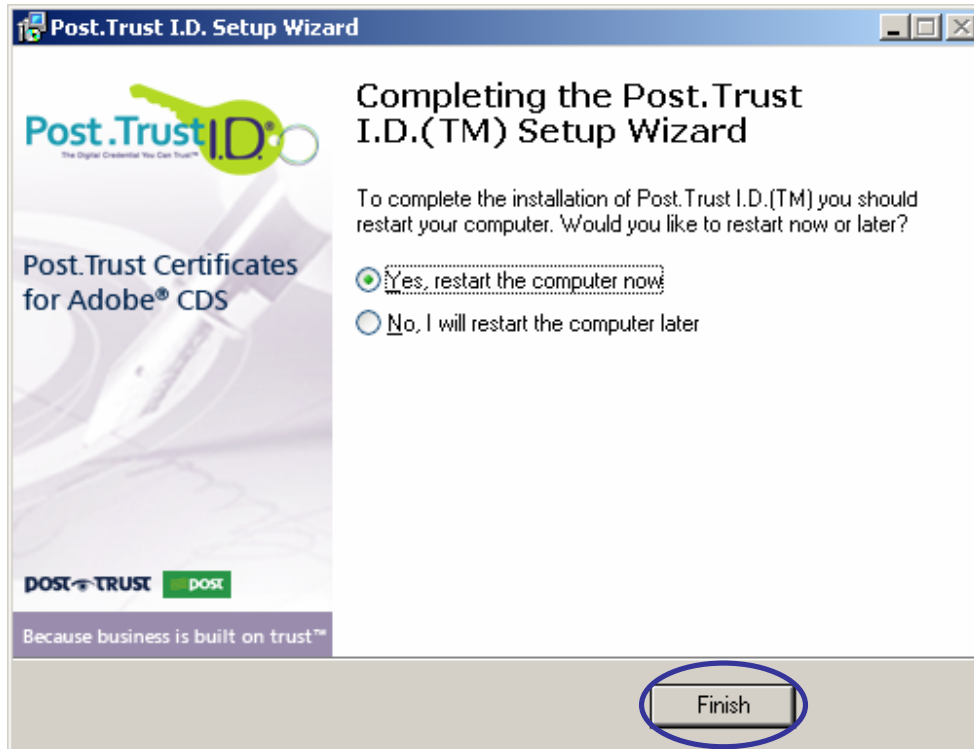


Figure 10 – Post.Trust I.D. Setup is complete

## Uninstalling Post.Trust I.D.:

1. The following programs were installed onto your computer during the Post.Trust I.D. setup installation process:
  - Post.Trust I.D. v1.0.0.0
  - SafeNet Borderless Security PK Client
  - SafeNet iKey Drivers v4.1.0.1006
  - SafeNet Logger Utility v1.0



2. Launch 'Add or Remove Programs' from the Control Panel. Select Post.Trust I.D. v1.0.0.0 in the list of currently installed programs and click **Remove**.

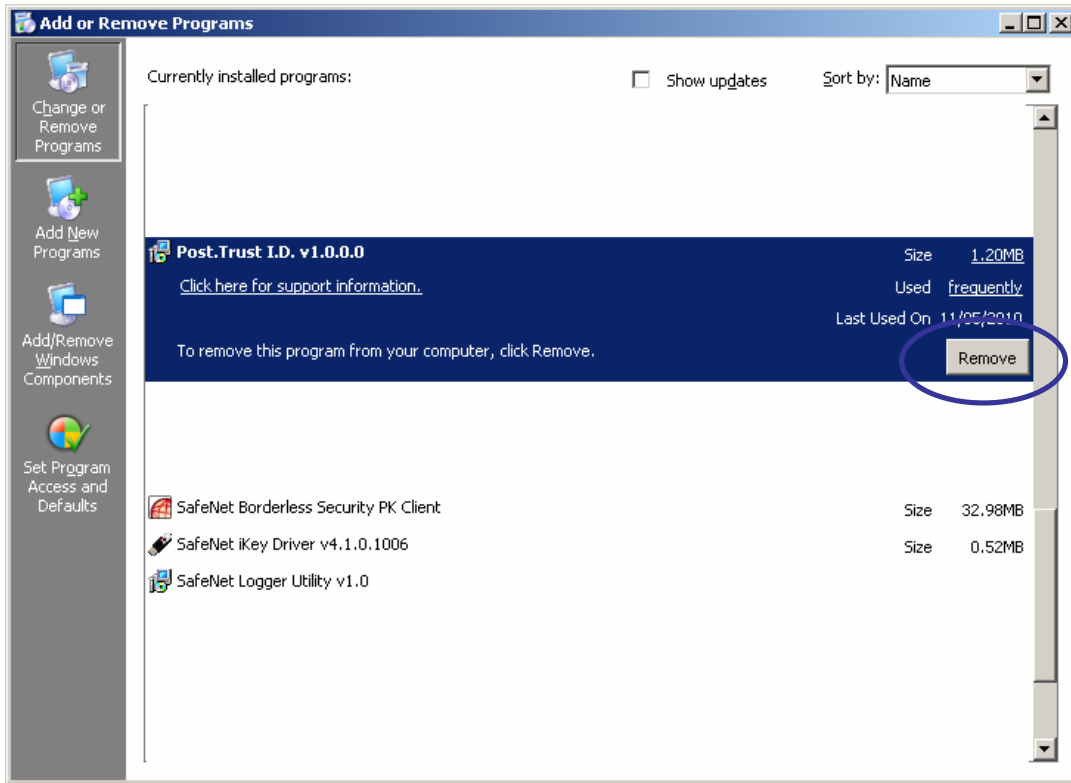


Figure 1 – Add or Remove Programs Window

This will remove Post.Trust I.D. v1.0.0.0, SafeNet Borderless Security PK Client and SafeNet iKey Drivers v4.1.0.1006.

3. The following screen will appear. Click **Yes**.

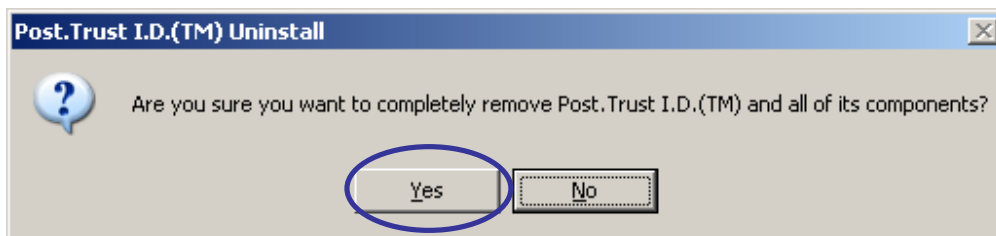


Figure 2 – Uninstall Post.Trust I.D.

- The SafeNet iKey Driver is being uninstalled. No user interaction is required.

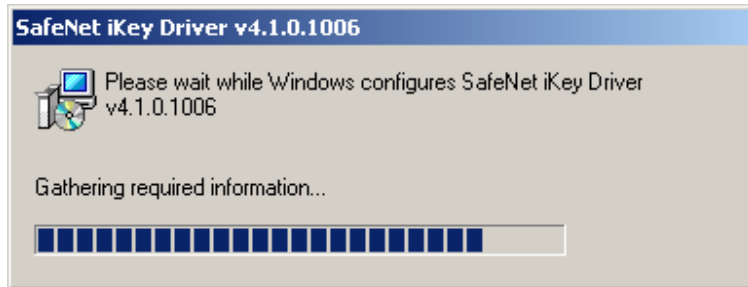


Figure 3 – SafeNet iKey Driver uninstall

Note: If you have a token inserted in the USB drive then you will get the following warning:



Figure 4 – SafeNet token detected

Unplug your Post.Trust I.D. token if you have not already done so and click **OK**.

- The uninstall process will continue as normal. No user interaction is required.

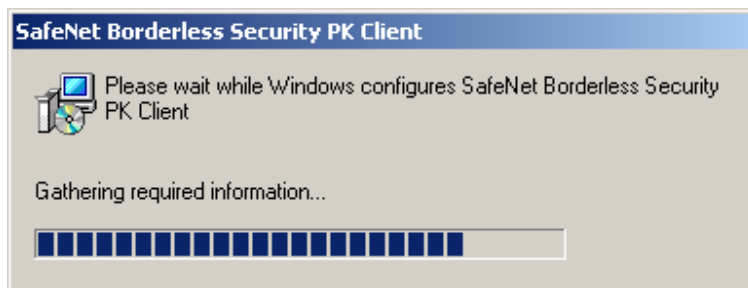


Figure 5 – SafeNet Borderless Security PK Client uninstall

6. When completed the following screen will appear. Click **OK**.

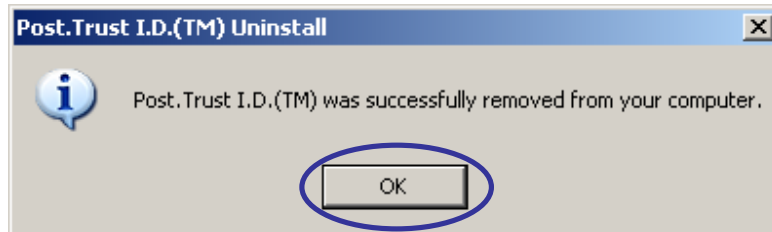


Figure 6 – Post.Trust I.D. uninstall complete.

7. To complete the uninstall process you should remove the SafeNet Logger Utility v1.0 which is not removed as part of the above process. In the list of currently installed programs select SafeNet Logger Utility v1.0 and click **Remove**.

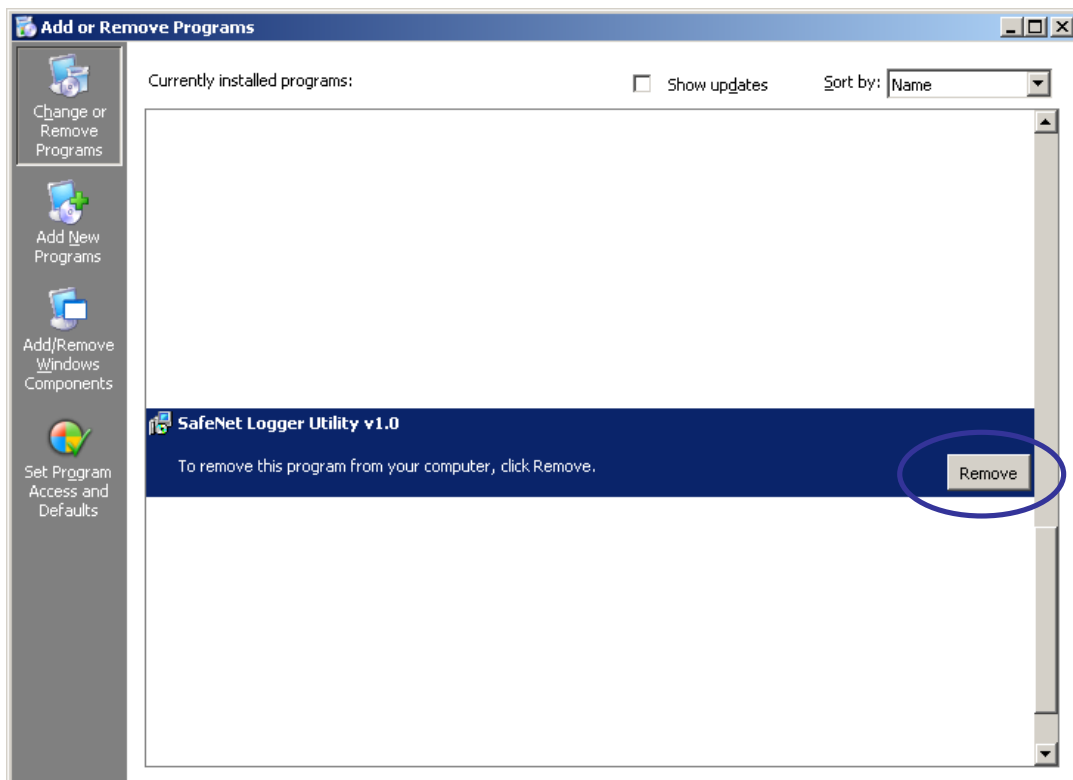


Figure 7 – Add or Remove Programs window

8. The following screen will appear. Click **Yes**.

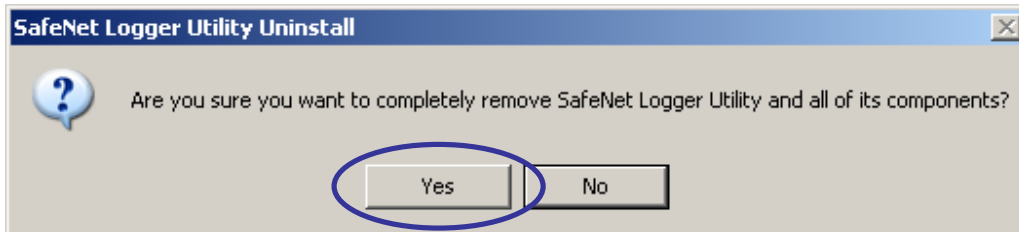


Figure 8 – SafeNet Logger Utility Uninstall

9. Click OK. The process for uninstalling Post.Trust I.D. applications is now complete.

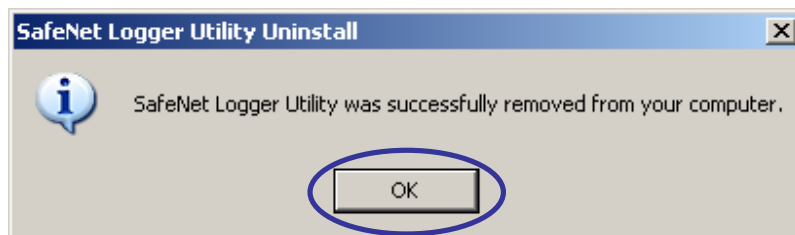


Figure 9 – SafeNet Logger Utility now uninstalled

## Other Useful Resources

For further useful information resources, user manuals and user guides, visit the **Downloads** section of the InfoCentre on the Post.Trust website or call Post.Trust Customer Services Centre on +353 (0) 1890 617 171.

The terms and conditions which apply to use of SpeediSign are available on the Post.Trust website at the following location:

<http://www.post.trust.ie/Downloads/UserSubscriberAgreement-Post.TrustAdobeCDSert.pdf>

\*\*\*\*\*

